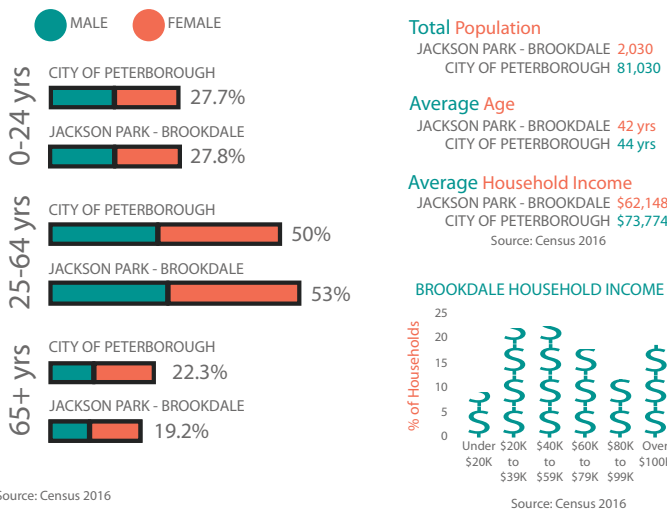


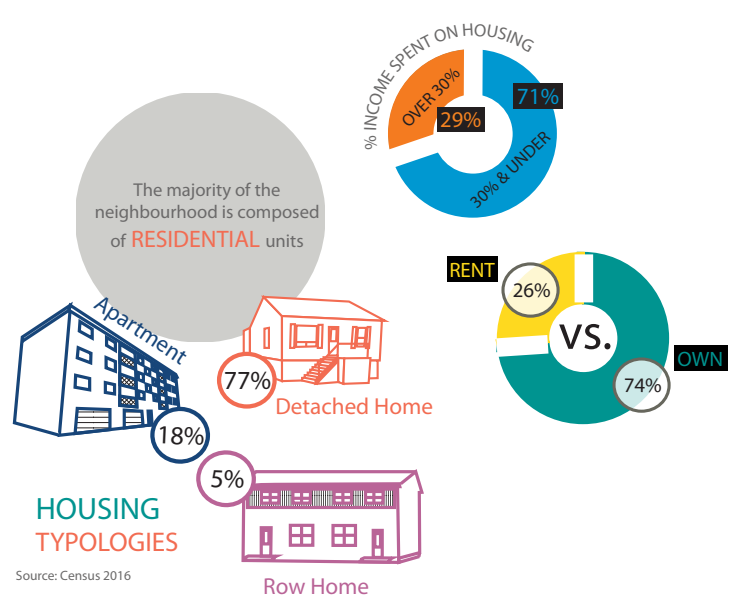


NEIGHBOURHOOD Portrait

4 GETTING TO KNOW YOUR NEIGHBOURS



Source: Census 2016



Source: Census 2016

1 THE NeighbourPLAN PROJECT

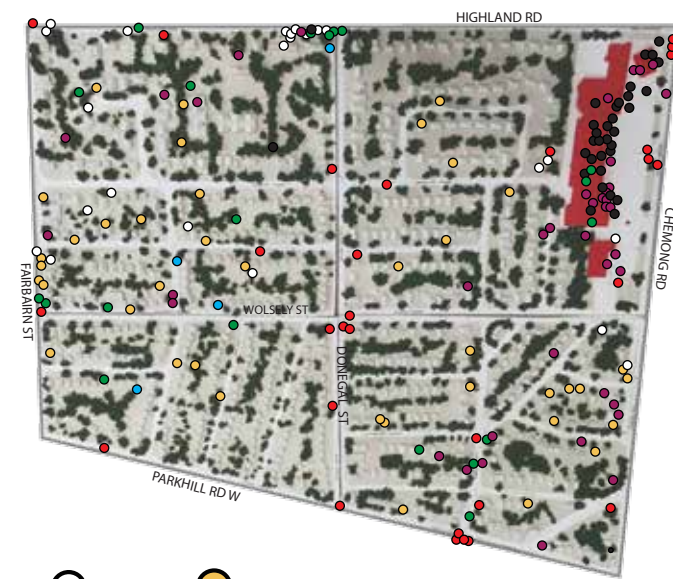
GreenUP and the Toronto Centre for Active Transportation (TCAT) are working together on the NeighbourPLAN project. NeighbourPLAN is a project of the Active Neighbourhoods Canada (ANC) partnership, which uses participatory planning to connect people and amplify their voices to create the improvements they want to see in their neighbourhoods. The project uses a co-design process to support people in reimagining the built environment to encourage active transportation, vibrant public spaces, and engaged citizens. Jackson Park-Brookdale is the first of three Peterborough neighbourhoods participating NeighbourPLAN. Learn about the process below!

- PHASE 1 PORTRAIT (Winter 2018)**
Understand how residents use public space and identify local needs and interests.
- PHASE 2 VISION (Spring & Summer 2018)**
Identify key design priorities based on the portrait, and explore how they could be applied.
- PHASE 3 PLAN (Fall 2018)**
Support residents in advancing their ideas and in meaningfully engaging in formal processes.



5 COMMUNITY ASSET MAPPING

Throughout the portrait phase, a 3D model of the neighbourhood was taken to various community events and spaces to understand resident perspectives of the neighbourhood. Conversations with residents revealed that Brookdale Plaza is an important gathering place for many, considering the lack of public spaces within the neighbourhood. Many felt afraid of the intersection of Wolsely St. and Donegal St., which is concerning because the intersection rests along a school route. Many also indicated Highland Road and Donegal Street as places of play due to proximity to nearby Highland Heights Public School.



- PLAY (white circle)
- WORK (blue circle)
- SHOP (black circle)
- GATHER (purple circle)
- LIVE (yellow circle)
- FEEL AFRAID OF (red circle)
- FEEL PROUD OF (green circle)

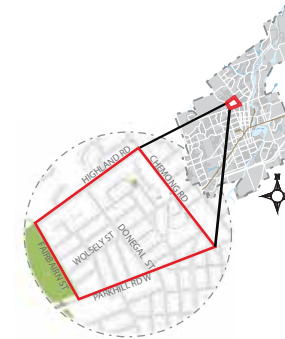
2 YOUR NEIGHBOURHOOD

The Jackson Park-Brookdale neighbourhood is located north of downtown Peterborough, west of the Otonabee River, nestled against Jackson Park. This neighbourhood is located in Nogojiwanong, on Treaty 20 territory, with responsibility for shared respect and recognition by all.

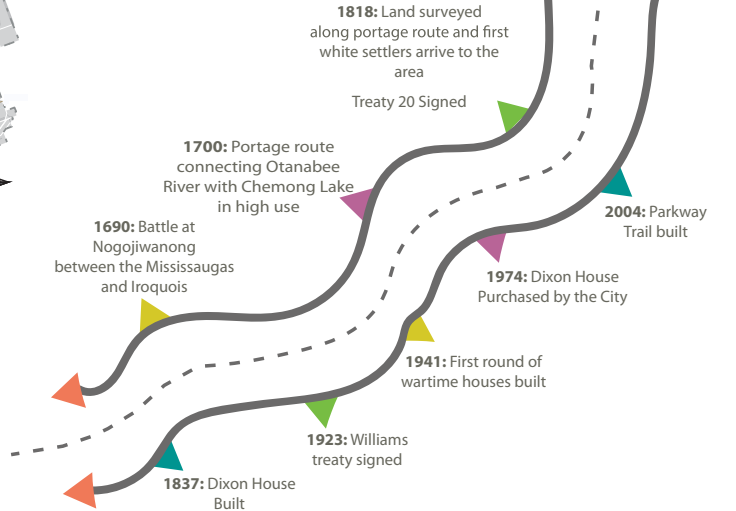
Jackson Park is a natural asset that supports an active culture in the community, providing locals with access to trails, woods and waterways. The unique character of the community is created by its residents and rich history, which is celebrated through the architecture of mid-century homes that are scattered along its streets.

The Jackson Park-Brookdale community has been asked to engage in a participatory planning process to have a conversation about how residents use public space in their neighbourhood, and identify issues with spaces that would benefit from potential improvements. Feedback gathered during this conversation will aid the development of the visioning and planning stages to come. Particularly in the development of design scenarios to resolve the identified issues in the portrait phase.

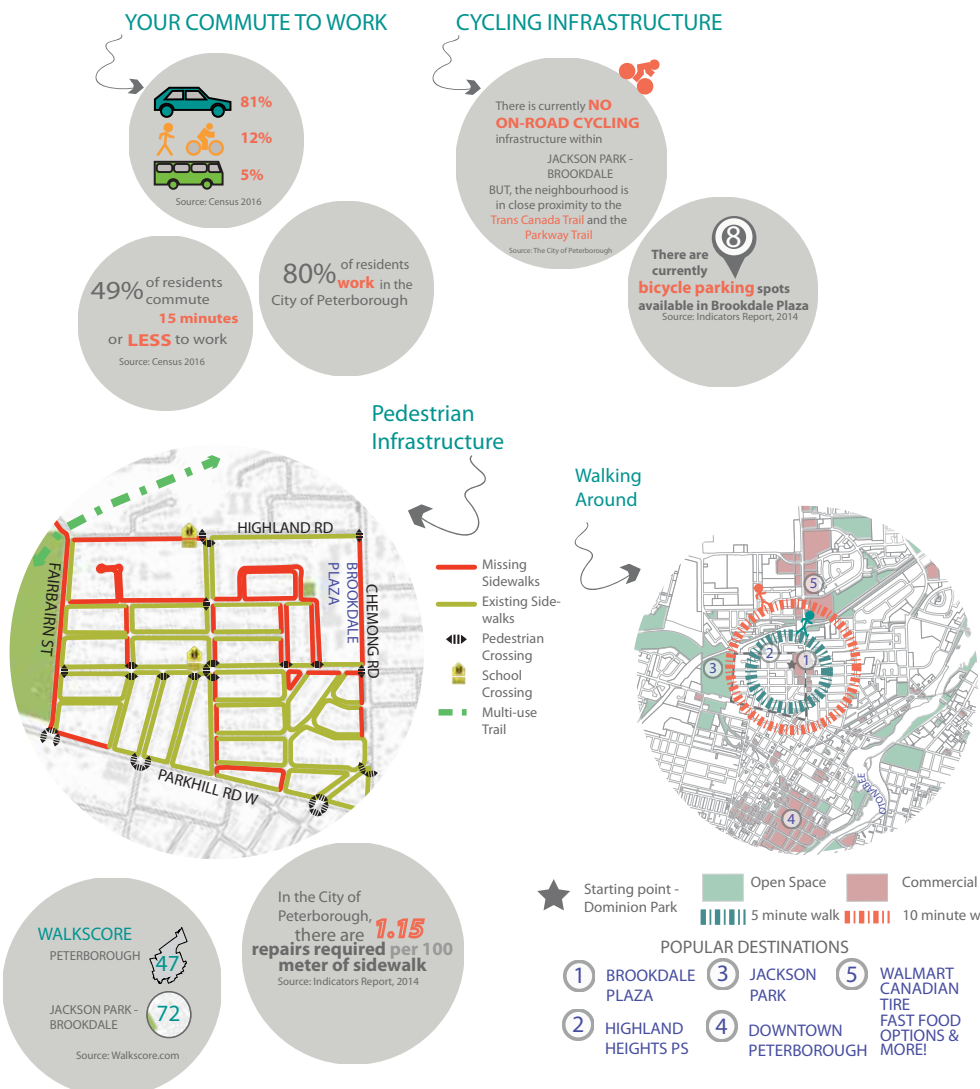
These design interventions will work towards creating a built environment that is comprised of active public spaces that encourage healthy, sustainable lifestyles.



3 JACKSON PARK - BROOKDALE HISTORY

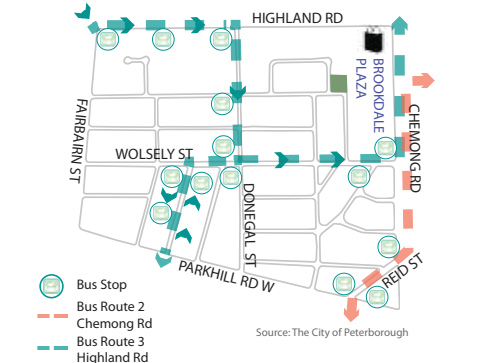


6 HOW THE NEIGHBOURHOOD MOVES



TRANSIT ACCESS

The Jackson Park-Brookdale neighbourhood is predominately serviced by route 3, which provides multiple transit stops throughout the area. Unfortunately, many of the bus stops are inaccessible, lacking proper pedestrian connections, shelter and seating. On the other hand, the neighbourhood is in close proximity to the bus terminal, where access to multiple transit lines are available.



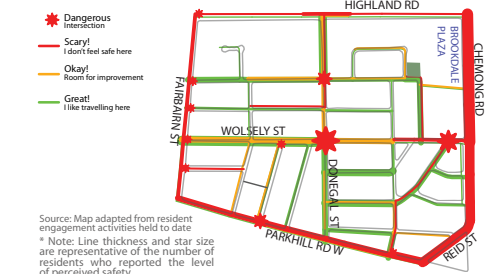
ROAD NETWORK

The community is bordered by streets that are designed to accommodate heavy car traffic, with a high capacity collector on Wolsely Street that brings this traffic through neighborhood streets. This splits the community in half and compromises pedestrian safety.



STREET SAFETY

Roads designed to accommodate heavy car traffic were identified by residents as unsafe places for pedestrians. Pedestrian safety was a key concern that emerged during the community engagement phase.



Source: Map adapted from resident engagement activities held to date
* Note: Line thickness and star size are representative of the number of residents who reported the level of perceived safety.